

## Program Snapshot

# EPIC

## Early-Stage Partners in Care

### WHAT IT IS



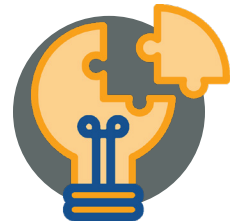
**EPIC** is a dementia caregiving program that offers six in-person group, and one in-person individual education and skill-building sessions for caregivers and persons living with early-stage dementia.

### HELPS CAREGIVERS WITH



Reducing stress

Problem-solving



Planning for the future through care preferences & values

### EASY DELIVERY & SERVES DIVERSE CAREGIVERS



Can be delivered by a lay leader, professional or paraprofessional



Offered in English & Spanish

### FREE & READY TO ADOPT



**EPIC** is proven, vetted and ready for implementation by organizations that support and serve dementia caregivers and their care recipients.

Training provided?  
**YES**

Cost to implement?  
**\$0**

## Learn More

**EPIC** is one of more than 40 dementia caregiving programs found in Best Practice Caregiving ([bpc.caregiver.org](http://bpc.caregiver.org)), a free, online database that helps organizations identify, compare and adopt best-fit programs for their clients and community.

**DIRECT LINK:** [bpc.caregiver.org/#programDetails/epic](http://bpc.caregiver.org/#programDetails/epic)